

Shoreline Adaptation Plans: Beachlands and East

Proposed Community Objectives

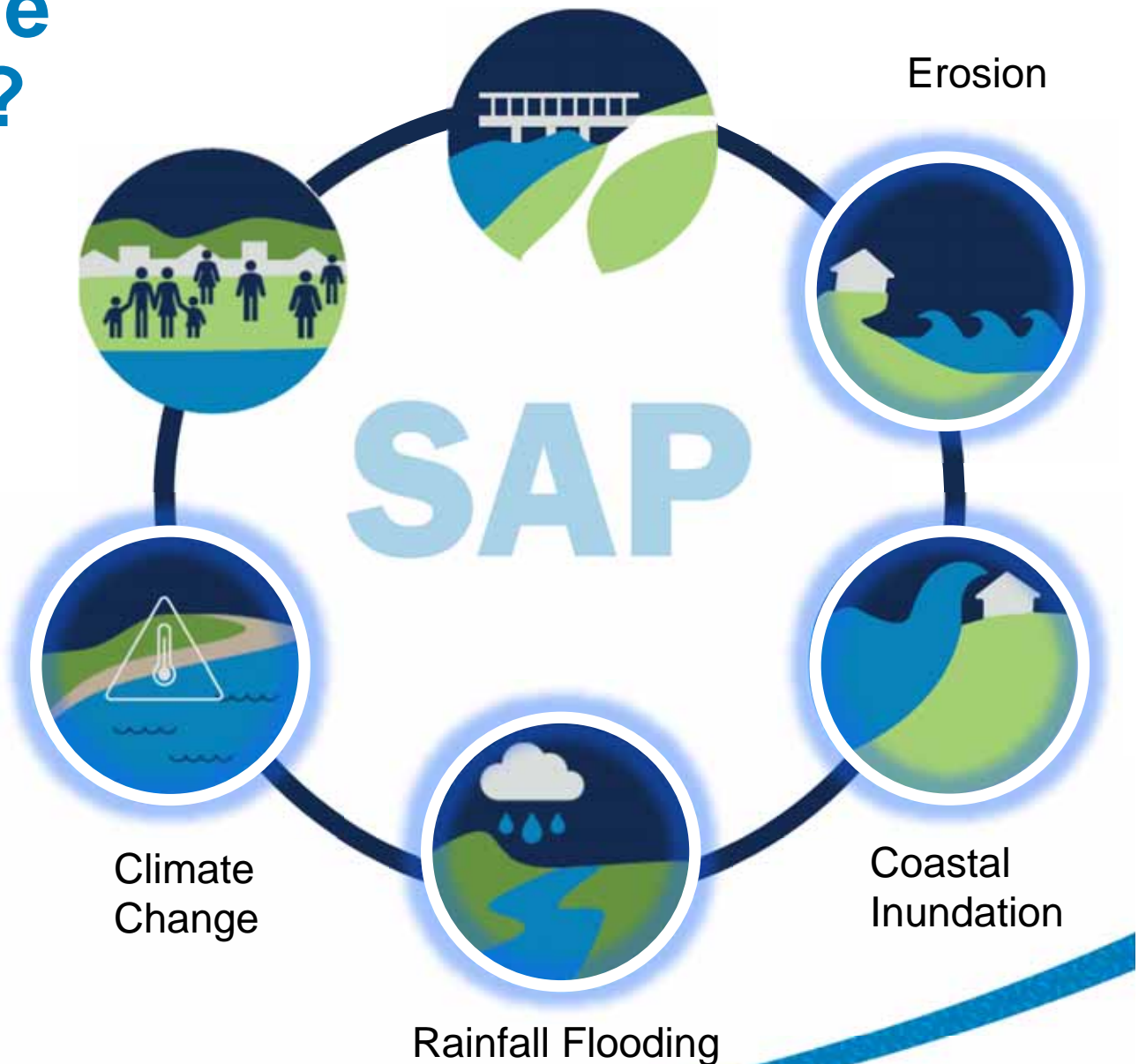
2022

SAP

What are Shoreline Adaptation Plans?

Adaptive plans that inform the long-term management of **Council-owned land and assets** on the coast, taking into account the impacts of **coastal hazards** and **climate change** and the values of the **local community**.

Shoreline Adaptation Plans are developed in **the spirit of partnership** with mana whenua.

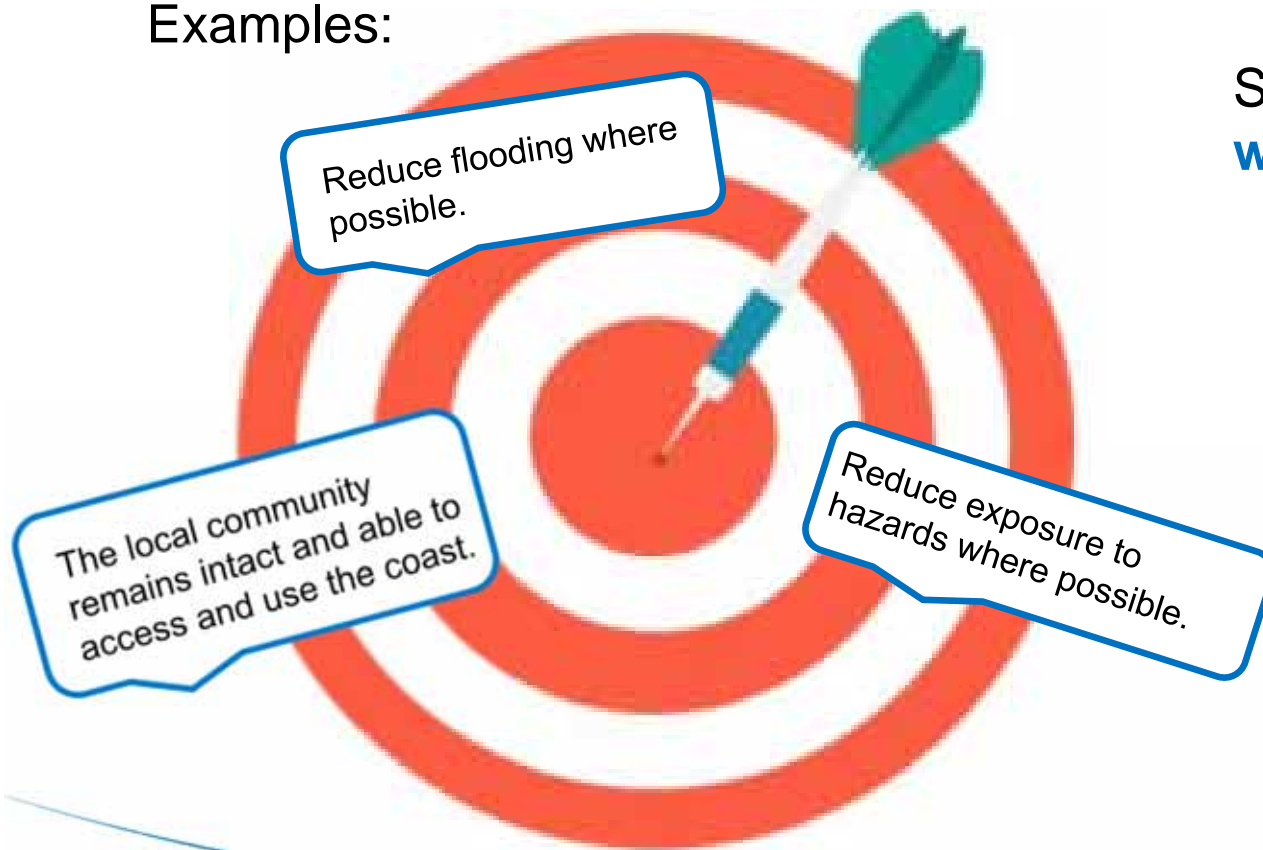


Objectives

Adaptive strategies need to **incorporate the values** of the local community and **meet the requirements** of assets owners and infrastructure providers.

To make good decisions, we need **clear objectives**.

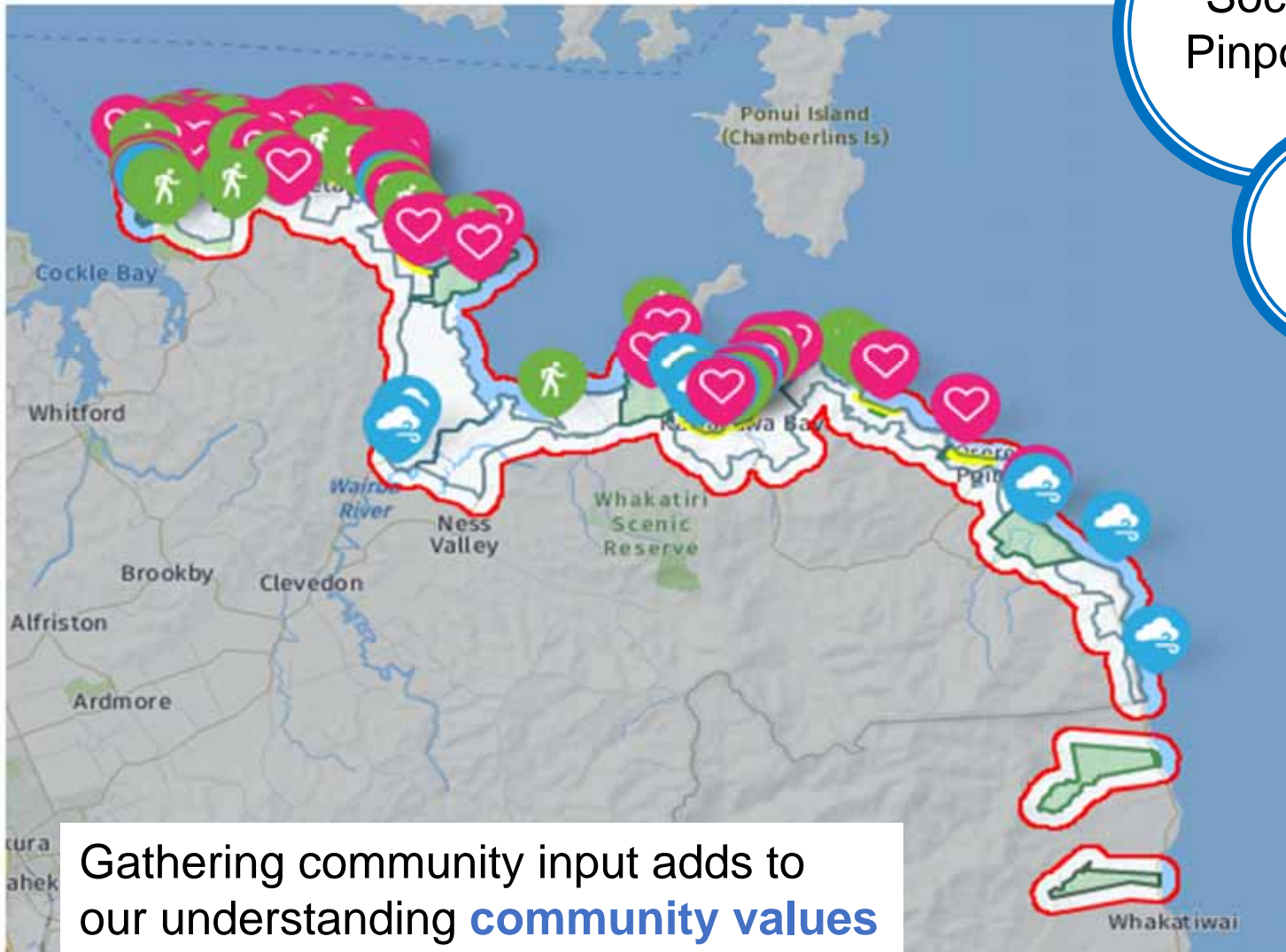
Examples:



SAP objectives are **developed with:**

- mana whenua
- technical experts
- infrastructure providers
- input from the community

Community Input



Gathering community input adds to our understanding **community values**

Social Pinpoint



In person and online events

Survey

We have collated community input via **Social Pinpoint**, the **Engagement HQ Survey** and what we heard during **in person and online events**

To learn more visit:

www.akhaveyoursay.aucklandcouncil.govt.nz/beachlands-and-east

Community Values

To decide **how to adapt** an area, we need to understand how the **community** uses and **values** that space.



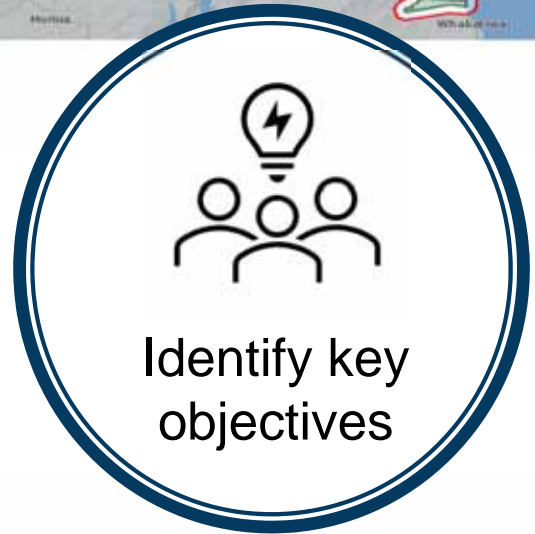
Active recreation including kite surfing, windsurfing along the coast. Cycling, running and playing at the beach

The recent upgrade to the playing surface has lifted amenity values

The Boat club and ramp enable boat launching here

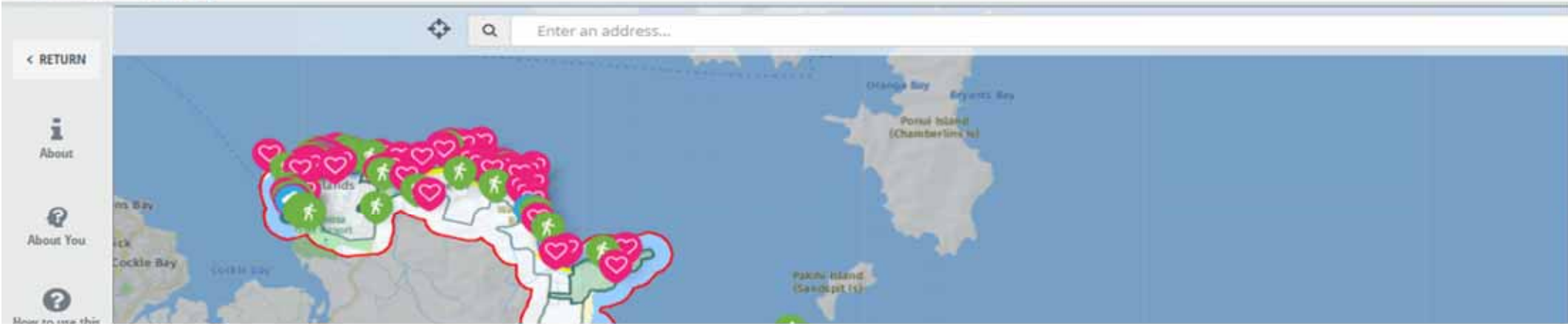
Accessible parking and easy access to the beach

Great to enjoy the views. Value of the wetlands



Community Feedback- Social Pinpoint

Auckland Council logo and navigation icons: Drag to comment, I value this..., I go here..., I remember...



985

Total Visits

352

Unique Users

2:12

Avg Time (min)

142

Unique Stakeholders

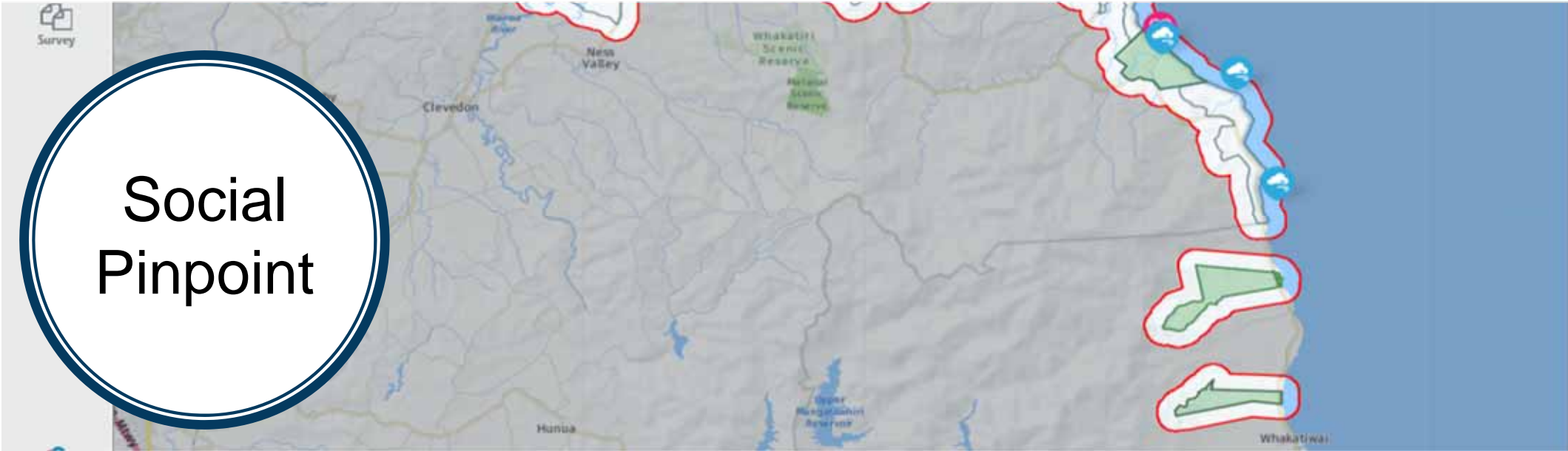
133

Comments

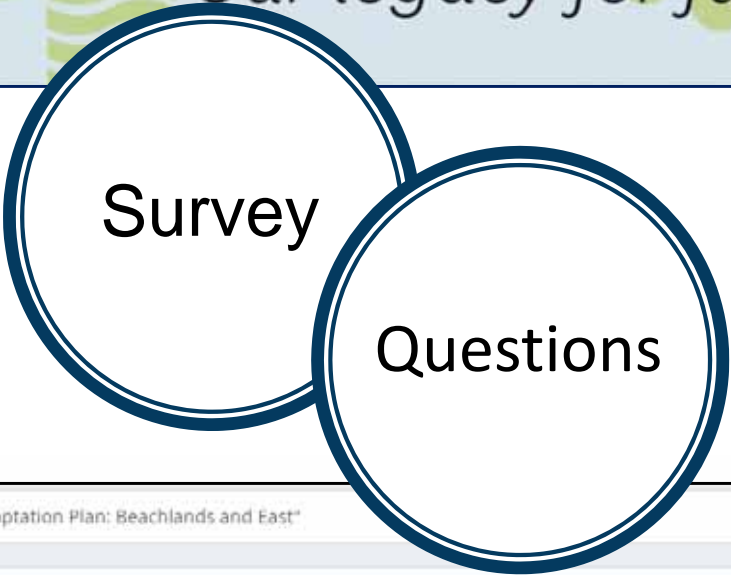
166

Survey Responses

Social Pinpoint



Community Feedback- Engagement HQ Survey

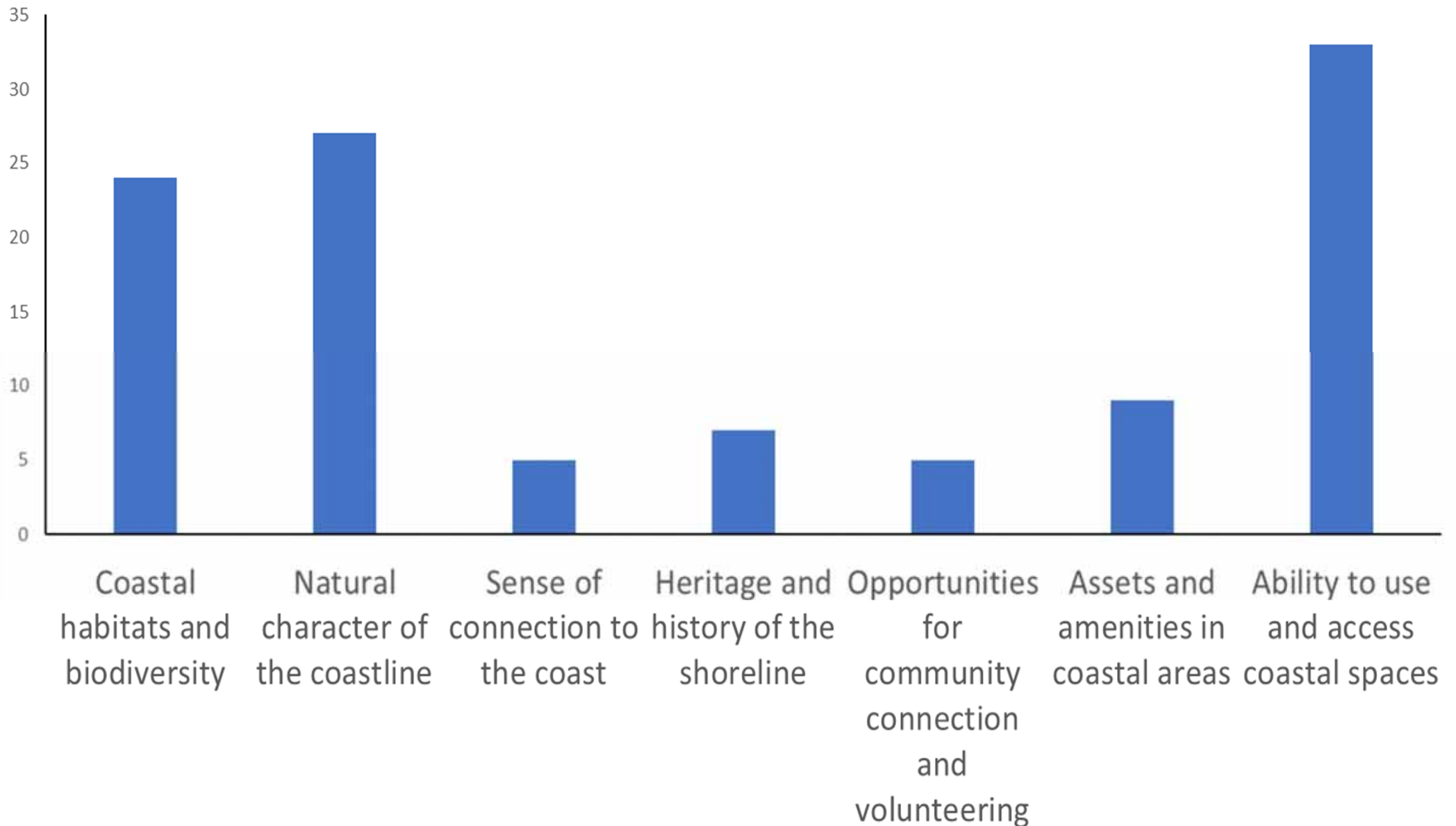


22 Surveys Completed
12 Questions Submitted



Engagement HQ Survey Results:

Q10002 - When thinking about the coastal areas and how you use and value them, what matters most to you?

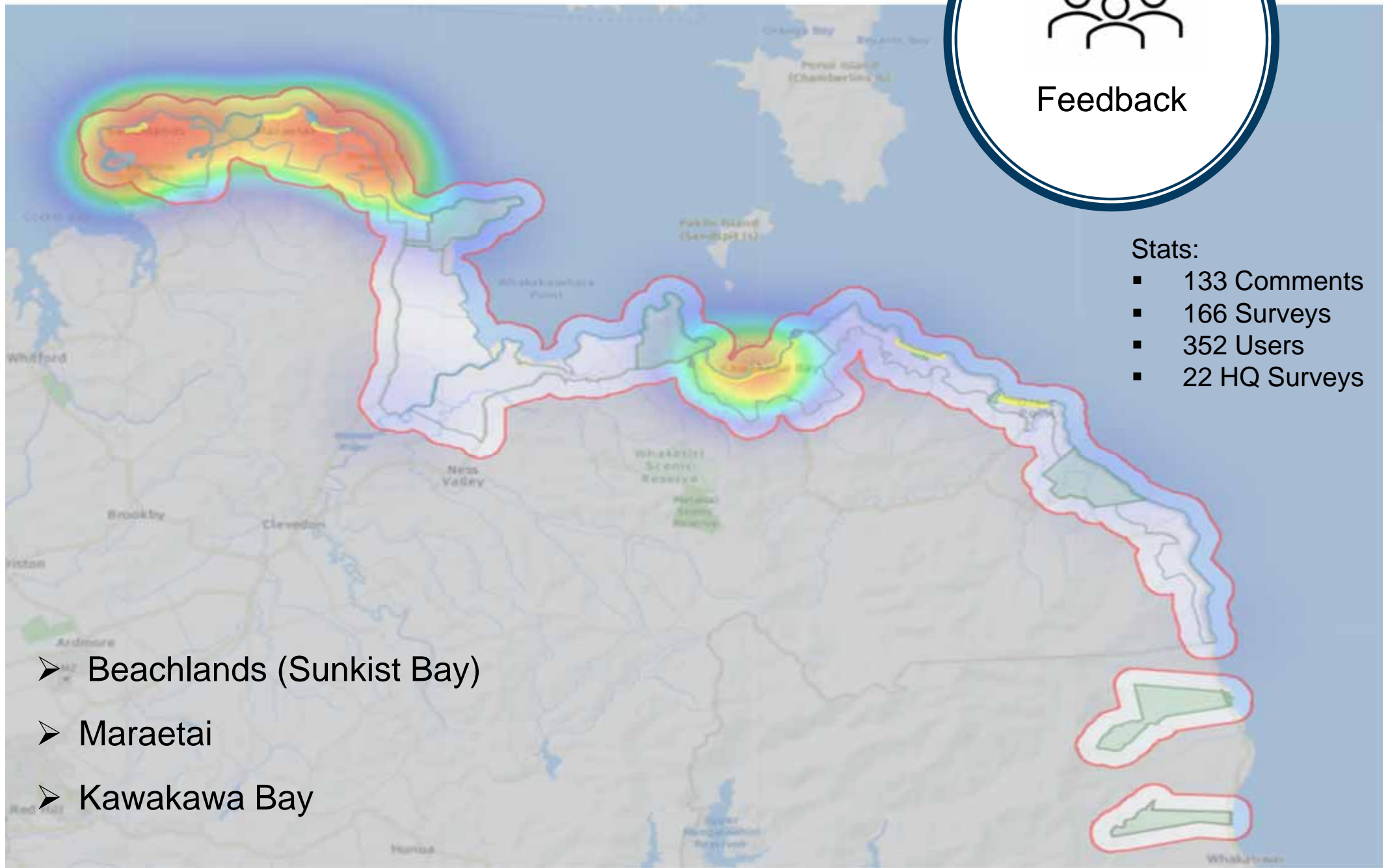


Areas of Interest



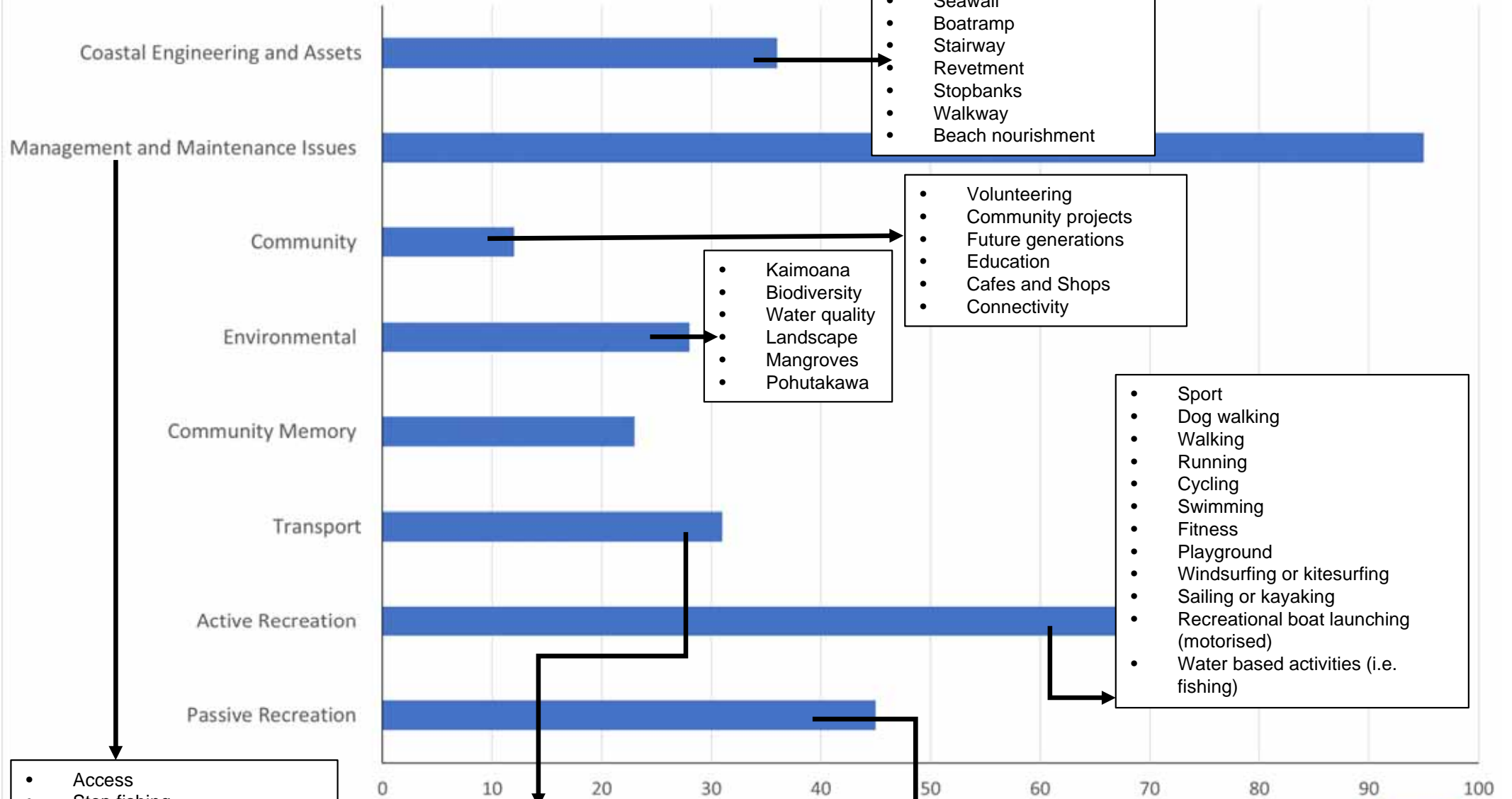
Stats:

- 133 Comments
- 166 Surveys
- 352 Users
- 22 HQ Surveys



- Beachlands (Sunkist Bay)
- Maraetai
- Kawakawa Bay

Tag Categories



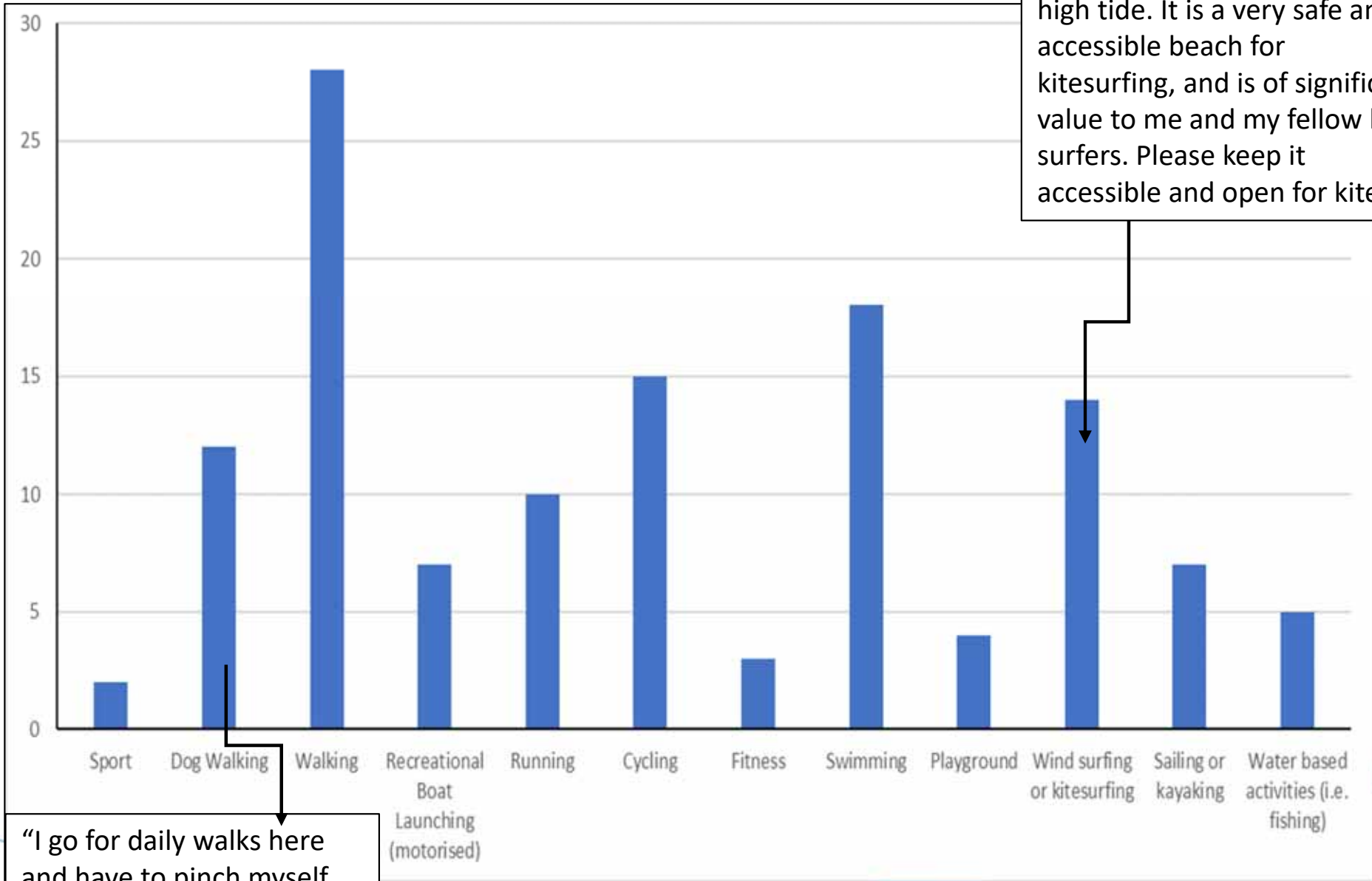
- Access
- Stop fishing
- Road safety improvements
- Mowing
- Erosion
- Freedom campers
- Path maintenance
- Tree issue
- Facilities
- Litter
- Pest control (flora and fauna)
- Bylaws
- Cycle path and bike stands

- Commuting by ferry
- Cycling to leisure destinations
- Walking to leisure destinations
- Commuting- Cycling
- Traffic
- Parking
- Bus Link
- Roads

- Connection with nature
- Connection with the Coast
- Viewpoints
- Sitting on beach or grass
- Quiet area
- Kid friendly
- BBQ or picnic
- Camping or Freedom camping

Active Recreation

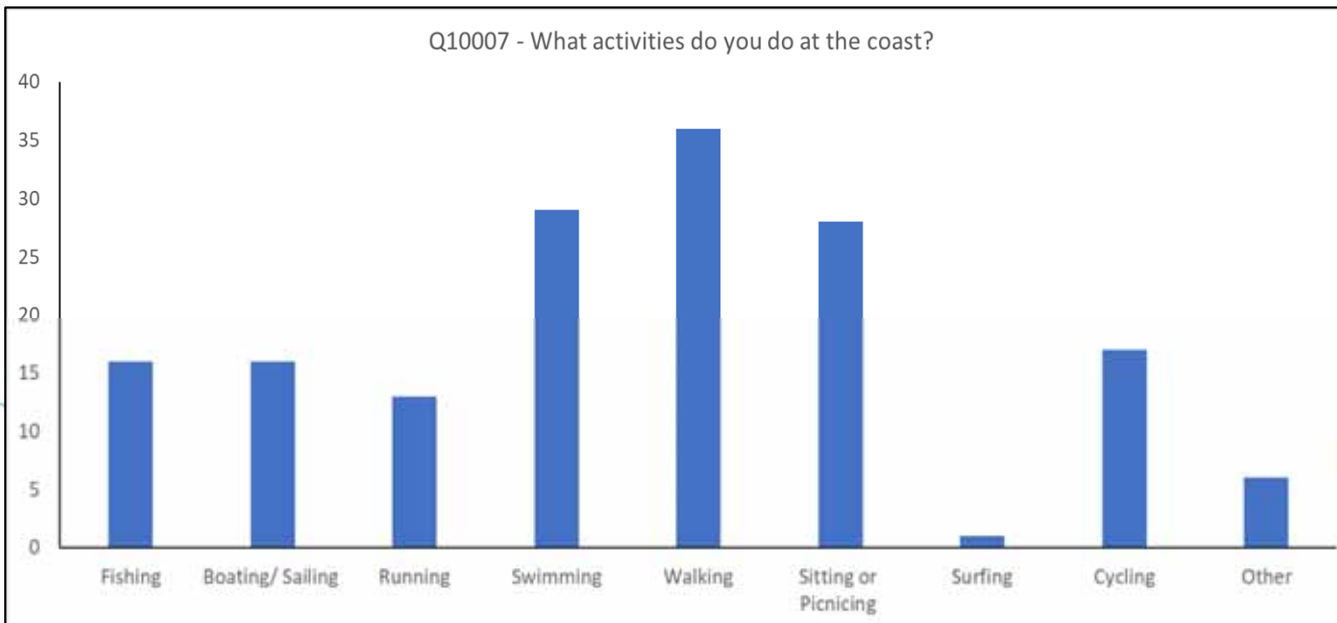
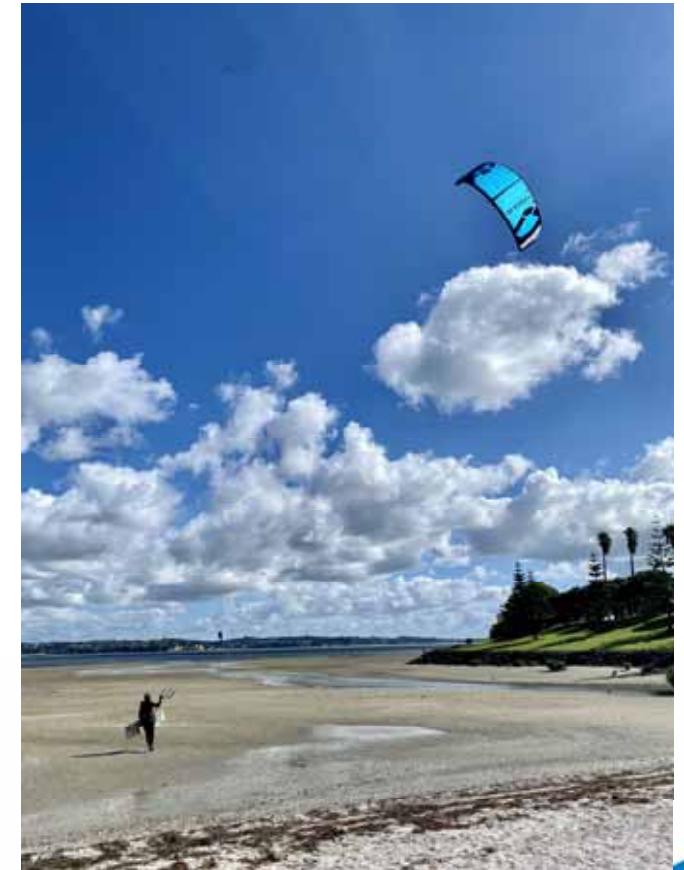
“Pine Harbour is my favourite place for kitesurfing, at low or high tide. It is a very safe and accessible beach for kitesurfing, and is of significant value to me and my fellow kite surfers. Please keep it accessible and open for kilters”.



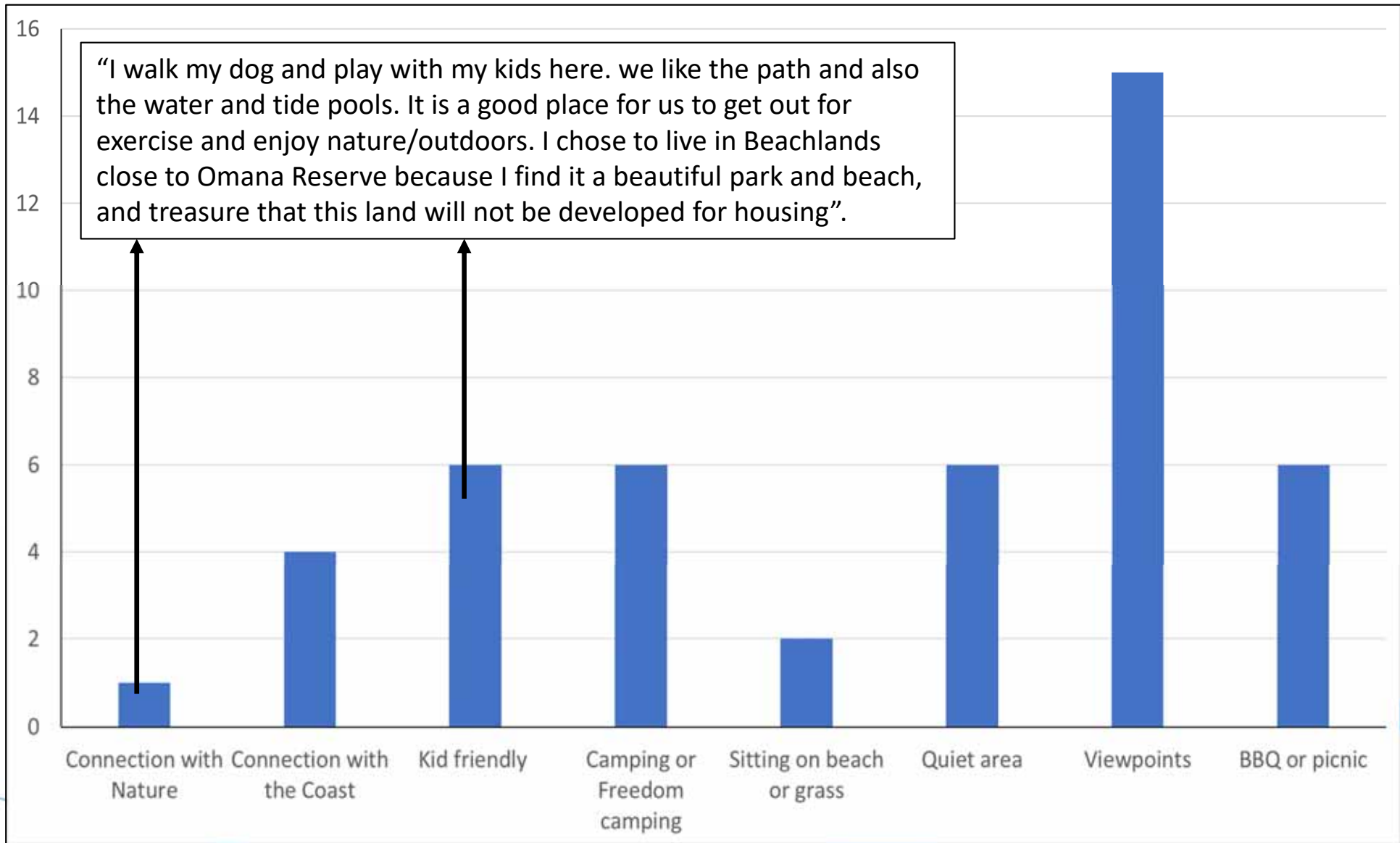
“I go for daily walks here and have to pinch myself that I live in this beautiful green area.”

Active Recreation: Proposed Community Objectives

- Provide safe access with parking to the Coastal Marine Area for a range of water-based activities at a range of tide levels (e.g, swimming, sailing/boating, kiteboarding and surfing).
- Enhance opportunities for pedestrian and cycling movements along the coastline, integrated with the existing coastal walking and cycling experience throughout the Beachlands and East setting.
- Identify existing locations for motorized boat launching where improvements will provide the greatest benefit to the wider network.



Passive Recreation

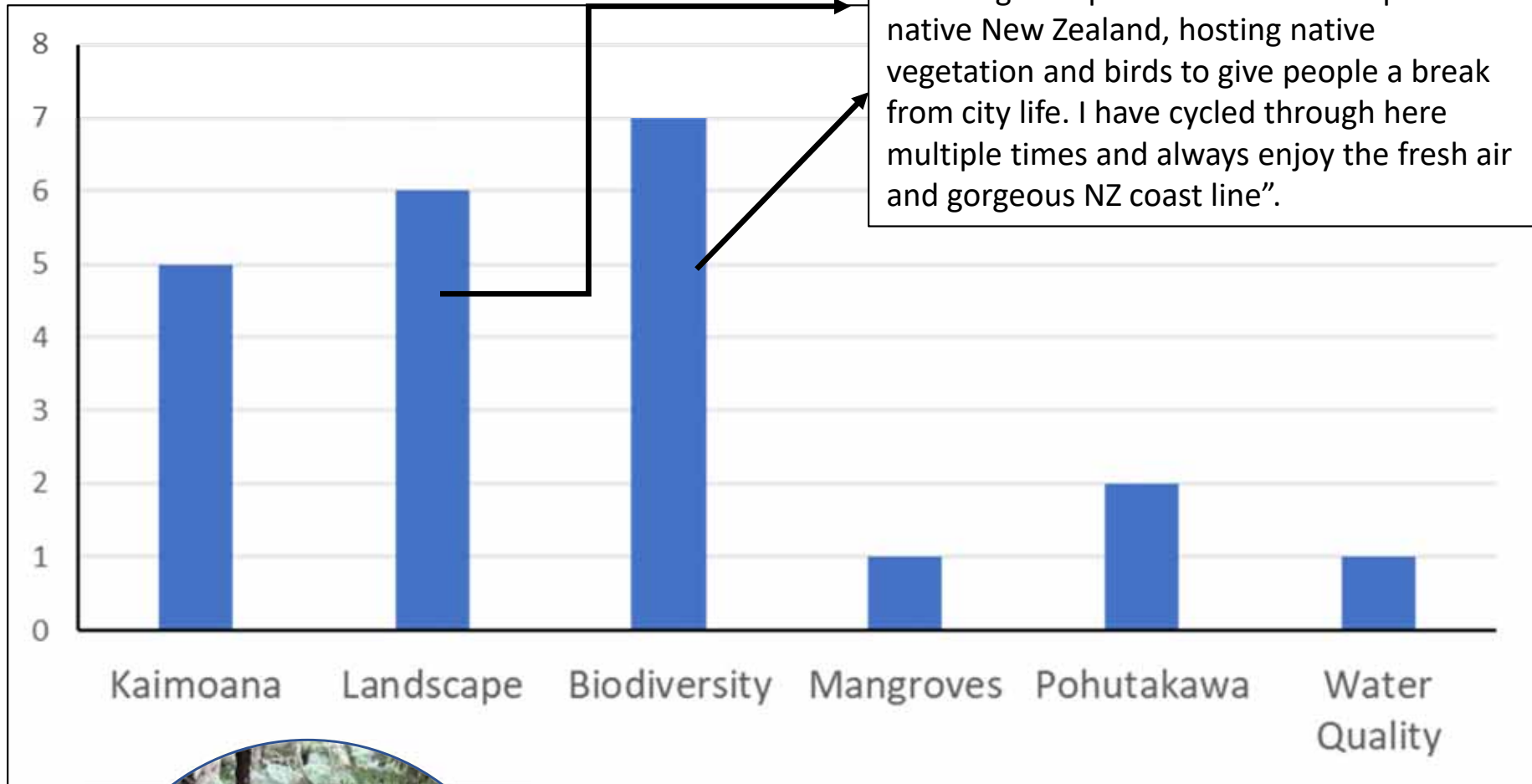


Passive Recreation: Proposed Community Objectives

- Have accessible places within coastal reserves where people can enjoy the environment in its natural setting



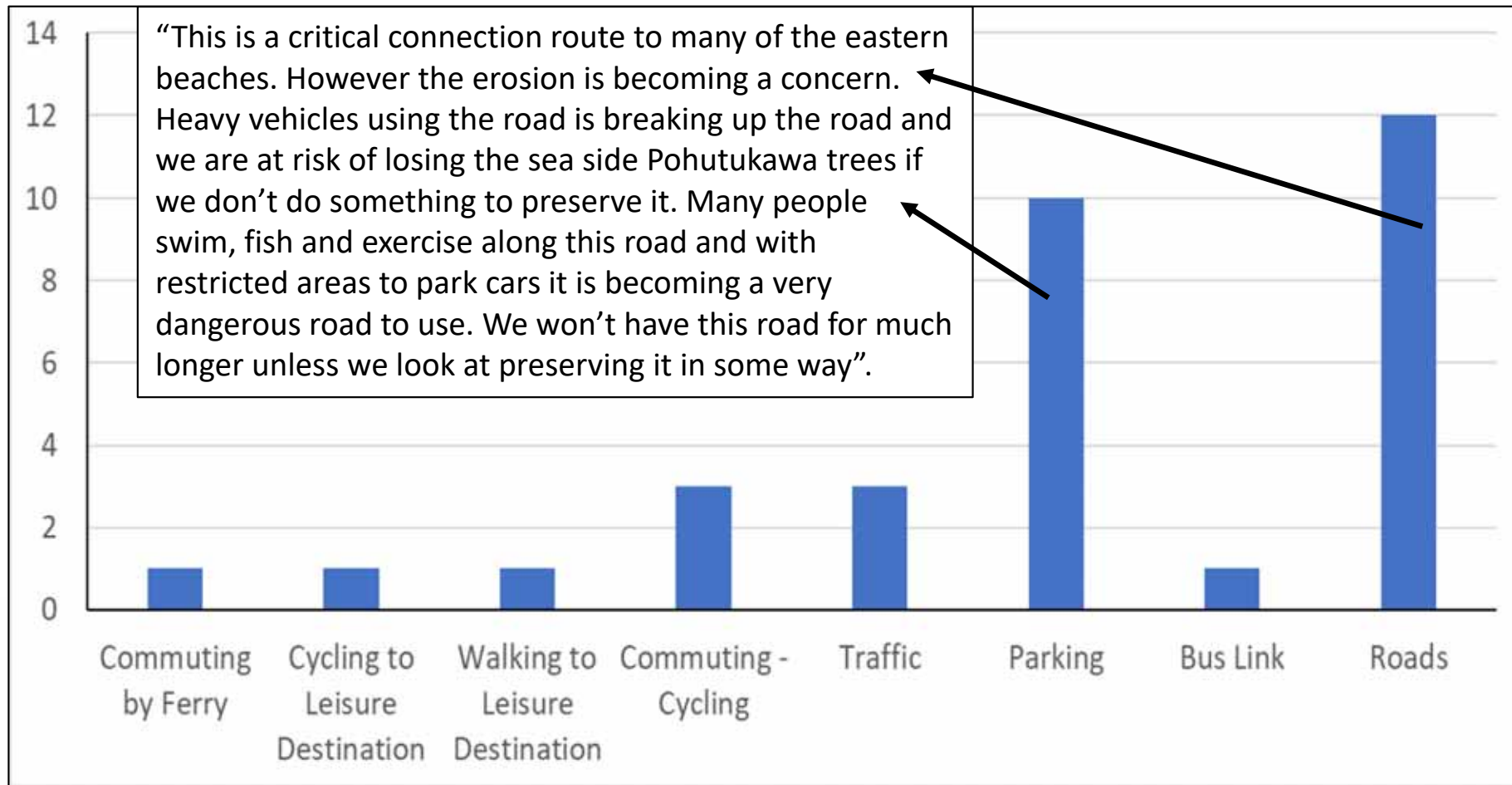
Environmental



Proposed Community Objectives:

- Preserve and enhance the natural environment and ecosystems and support biodiversity

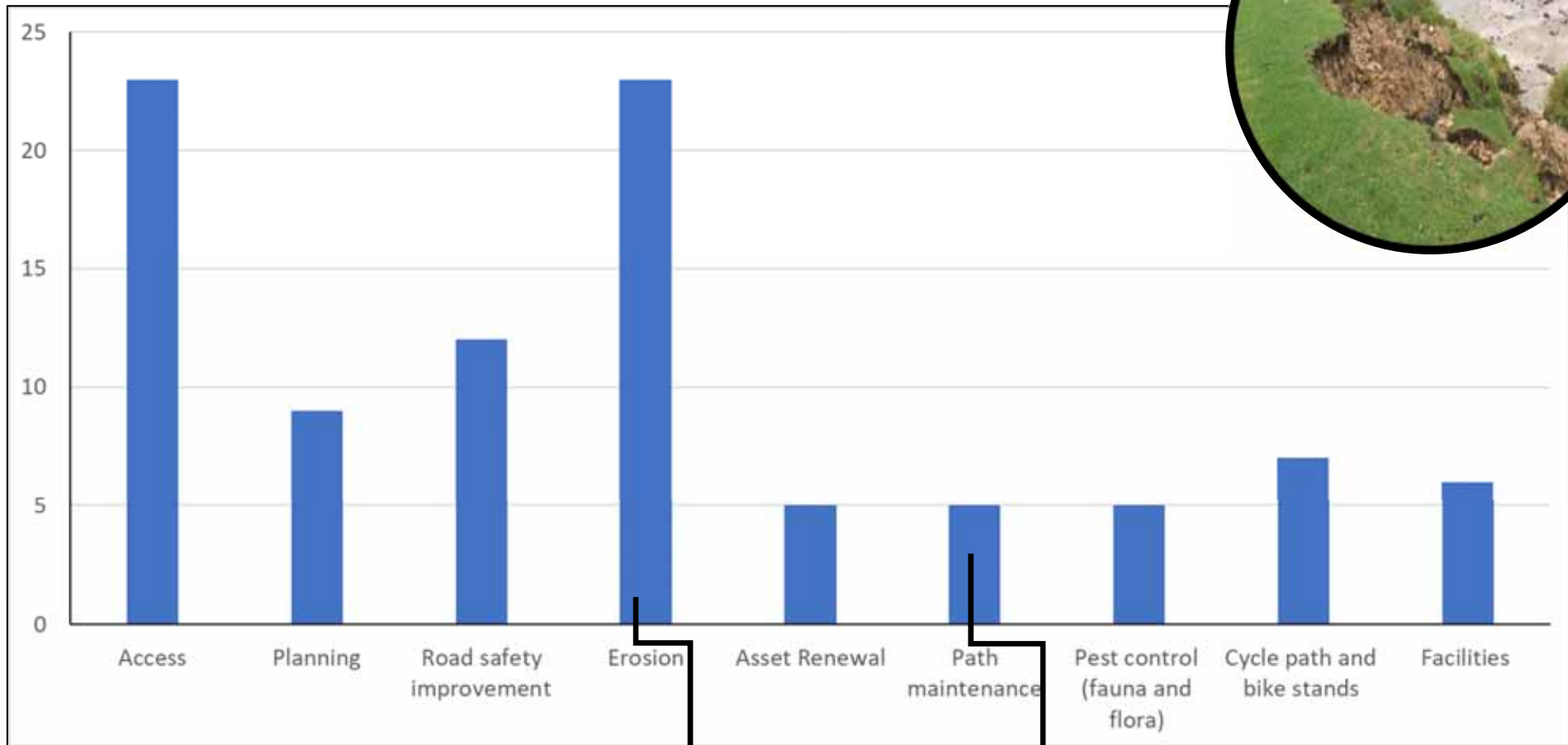
Transport



Proposed Community Objectives:

- Work with Auckland Transport to develop a resilient road network for the area, which supports increased access for a diverse range of transport types and coastal access for recreation.

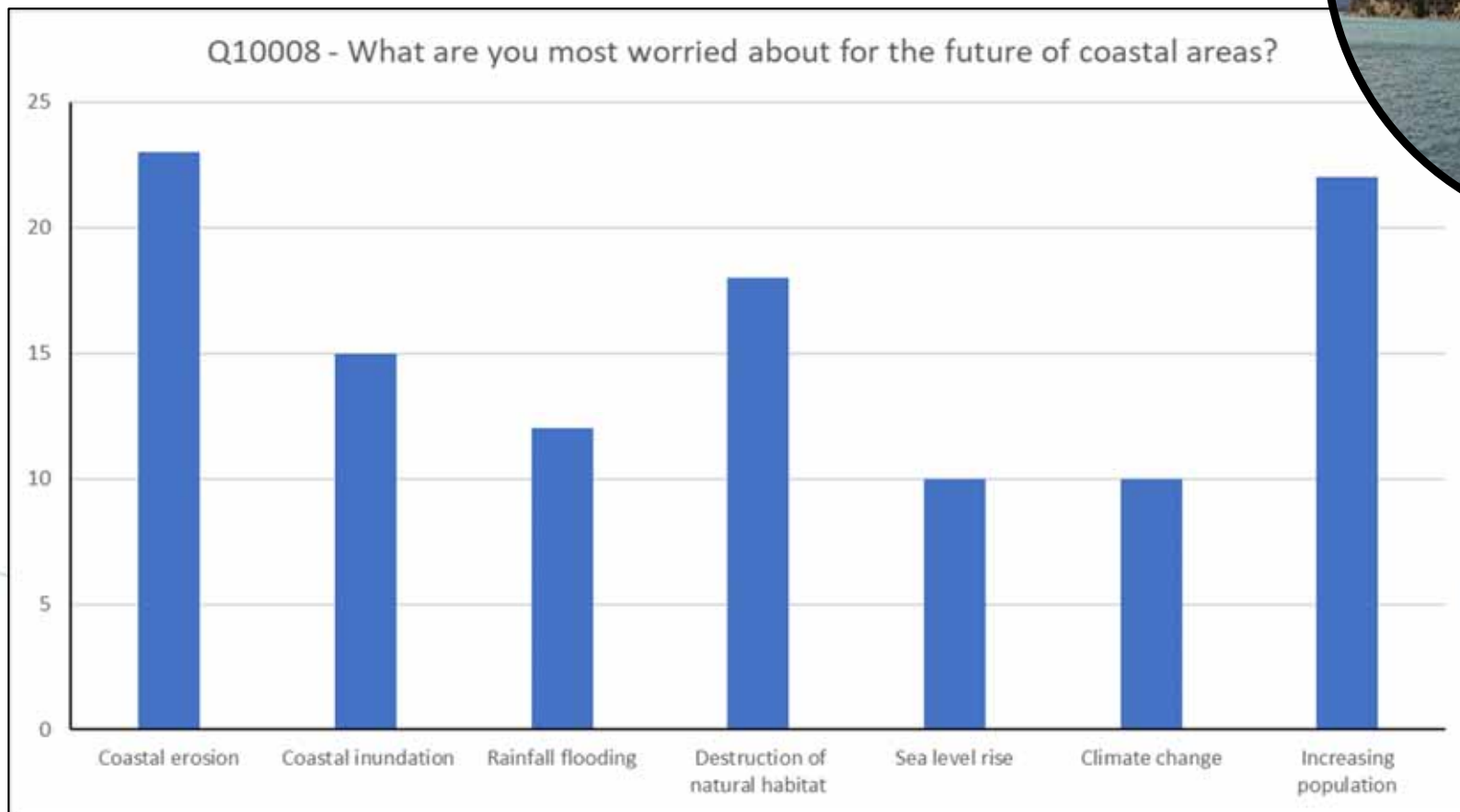
Management and Maintenance Issues



“I regularly walk here. Erosion is excessive along the beachfront here, and immediate remedial work needs to be done before the sea erodes into the existing pathway. Established Pohutukawa trees are being seriously undermined”.

Management and Maintenance Issues: Proposed Community Objectives

- In the short term, work with Auckland Emergency Management to develop a community resilience network across Beachlands and East.
- Resilience of assets in hazard zones is considered priority in asset management decision-making to support service provision and ensure disruption is limited.



Next Steps

- Extended the engagement period for another two weeks
- Proposed objectives will be available online for the community to discuss
- Public feedback will close *February 25th 2022*
- Outcome Event in April/ May

To find out more, visit:



**AK
HAVE
YOUR
SAY**



www.akhaveyoursay.aucklandcouncil.govt.nz/beachlands-and-east

Shoreline Adaptation Plans

Question and Answers

Coastal Assets and Engineering

